

# Hdb2Win/PaleoTax

Program Release 2.3 (15 January 2009)

PaleoTax Service Release 10

## Modifications compared to program release 2.2.2

### *Hdb2Win*

#### *General modifications*

The Spanish version is released. The translation is not yet totally completed. Some error messages are not yet available as well as messages of programs etc. Lacking Spanish messages will be replaced by those in English. Nevertheless, most important messages and dialogs and all forms are available in Spanish. Comments are welcome.

Note, that any foreign language can be incorporated by yourself. If you want to have your own version in Swedish or Suaheli, just overwrite the Spanish text in the MSG and FRM files. The format of the MSG files is ANSI, so you can edit these files for instance with the WordPad. Save them as plain (ANSI) text. The Spanish text is marked with 'S' :

D	201	:	Datenbank listen
E	201	:	List table
S	201	:	Listado de archivo
D	202	:	Formatierte Ausgabe
E	202	:	Formatted output
S	202	:	Salida formateada
D	203	:	Klassierung der Daten
E	203	:	Classify data
S	203	:	Clasificar datos

The FRM files are in the ASCII format, so please edit them only in the editor provided with HDB2Win (use the command line, select the directory using the 'CD <path>' or 'CD ?' command, and type 'ED \*.FRM' to edit any FRM file). The Spanish version is always the third text :

```
LABEL      203, "Bezeichnung", "Name", "Denominación".
```

#### *Options*

For the options previously saved in the HDB2WIN.INI see the Manual provided for version 2.1 and the documentation files on later versions. Herein, only new options are reported. The current number refers to the functions SSYS and GSYS of the interpreter which have access to this values. The text in [brackets] indicates the section in the option table.

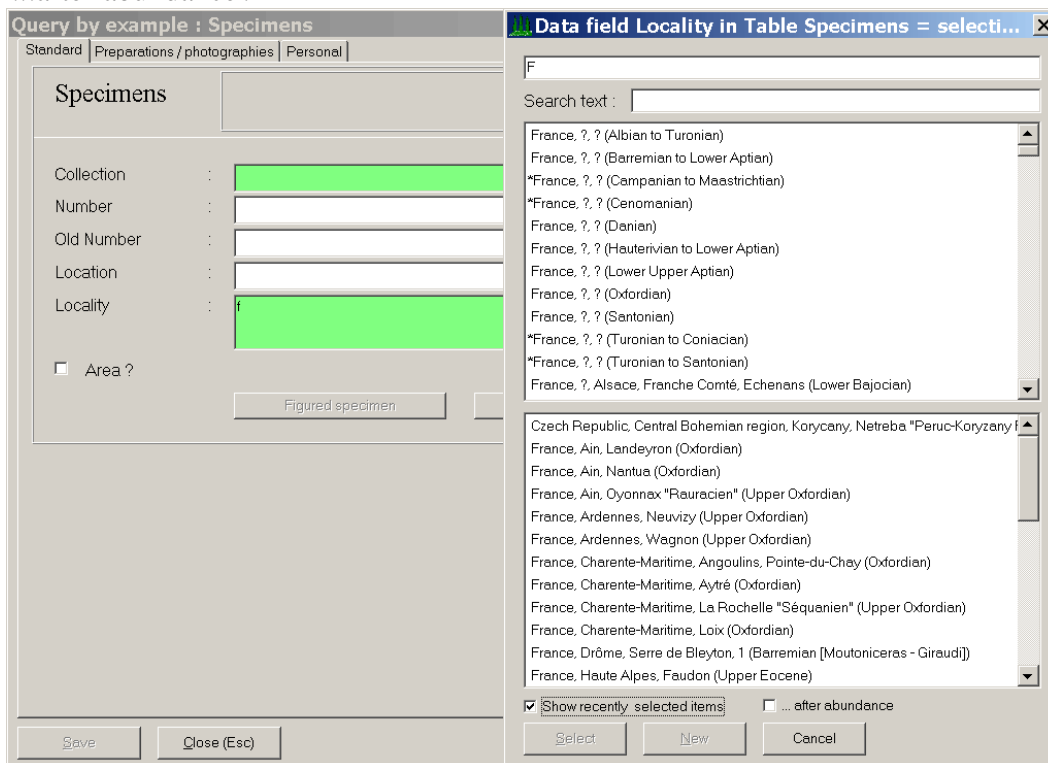
89 [HDFRM] ShowBlueHint Enables or disables the top boxes with additional information in a blue font.

- 90 [HSSTR] OpenWithinFrame Opens a new window always in the frame of the calling (parent) window and not in the centre of the screen. This is an option when wide screens are used and the user wants to have Hdb2Win always on one side of the screen. This applies to all windows (except I forgot to program it). If this value is set to '1', the program also remembers the relative position of the PaleoTax Main Window. - This option is not set per default, you have to set it manually using the 'Extended Options' function (see here below).
- 91, 92 (internal)
- 93 [MAP] Datapath Records the data folder of the system map data (topographical and geographical data).

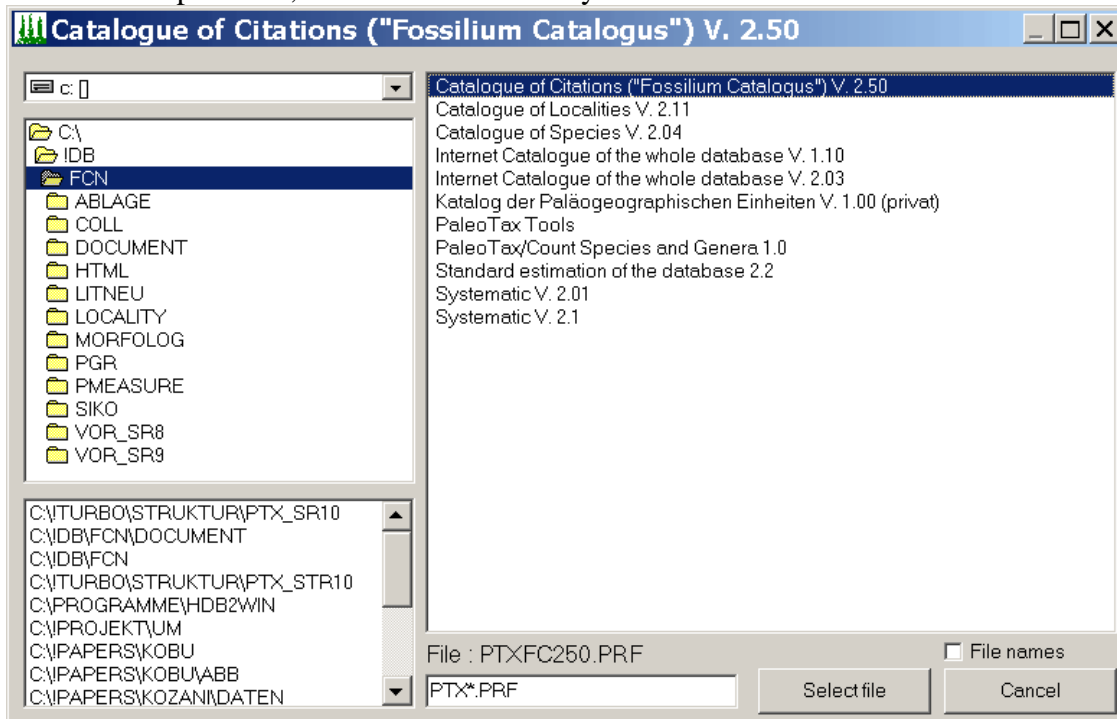
Please remember : almost all options can be modified using the new function 'Extended Options' which is found in PaleoTax/Options/Tools. This function opens a table with the module name, option name, a comment and the current value. Select an item from the table (press 'Enter') and change the value in the field 'New value' and click on 'Save'. By pressing 'Escape' in the table, the table is closed and you may decide whether you wish to apply the changes or not. Be careful, do not pass the indicated ranges. The program does not check anything. Any catastrophic changes can be 'undone' by deleting the file HDB2WIN.DAT in the 'c:\Documents and Settings\\Application data \Hdb2Win' folder.

### Various changes

- When selecting items from a interconnected table, a list of the most recently selected items can be used, ticking the box labelled 'Show recently selected items'. These items are normally alphabetically sorted, but if you wish to sort them after selection frequency, you may tick additionally the box '...after abundance'.



- Whenever a file is selected with the procedure provided by Hdb2Win, a list of the last used directories is provided, from which a directory can be selected.



- By pressing the 'Insert' key in a empty field which connects to another table, a new item will immediately be appended to this interconnected table.
- Pressing the 'Enter' key in any Listbox is handled as a double-click.

### **Interpreter**

The command

```
RELE      { <var> | <ALL> }
```

has been removed. Deleting variables during run time had catastrophic effects (sorry!). Per default, all variables which has been created by the Interpreter program are deleted at the end of the program. Using the RELE command will not cause an error, but will not have any effect at all (except for a message in the message area of the interpreter).

In the new version there are some important internal modification to allow a better re-entrance functionality, which was not given in full in past versions. Data buffer are kept locally by the interpreter for all tables and all runs. This was also necessary because during running one program, a second program is called in some cases (for instance from the Citation table, third page, 'Add new species' as first program; blue hints in the species table as the second program).

The problem and critical message, when in- and out-table are different, has been corrected with a routine which opens the correct table. The message still exists, but only in the output area of the interpreter.

New command

```
#VAR
```

lists in the status window the variables created by the current interpreter program and their respective content.

## PaleoTax

### Parameters

The parameter files (DB2) were modified for many tables, e.g. for better handling in the case of more than one author of a publication or a taxon and various other things.

### Forms

Forms have been completed with a 'Enter' procedure which displays informative text in a small box in the top area of the form of certain tables. This text informs mainly about new species and genera, types, type species, and so on. Any comment on this function is welcome. These 'blue hints' are set on per default; you can switch them off (Extended Options, see above).

The screenshot shows a software window titled "Species : 2/7709 = Parapolytremacis actinacioides Alloiteau, 1957". It has three tabs: "Standard", "Synonymy list", and "Occurrence". The "Standard" tab is active. The form contains the following fields:

- Species:** A text box containing "TS of: Parapolytremacis Alloiteau, 1957" with a copyright notice "© HLK 2008" to the right.
- Orig.genus:** A text box containing "Parapolytremacis Alloiteau, 1957".
- Species name:** A text box containing "actinacioides".
- Reference:** A text box containing "Alloiteau (1957)".
- Orig.SG:** An empty text box.
- Sub species:** An empty text box with a "var." checkbox to its right.
- Author(s) in ...:** A partially visible text box.

### Search form

The screenshot shows a software window titled "PaleoTax : Search in table «Species»". It is divided into several sections:

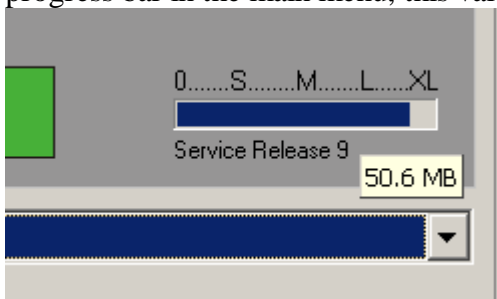
- Search mode:**
  - Query by example  Wildcard mode (\*)
  - Enter condition [...]
  - Full text search
  - Also in text fields:  No  Yes  Exclusively
  - Case sensitive
  - Output all
  - Record:
    - First: [25] Records
    - Last: [25] Records
    - Record from: [1] [1] Records
  - Proposal: search for ...
    - Species of the current genus [v]
- Process:**
  - Edit
  - List - Delimit fields: [Tabulator] [...]
  - Table (Browse) [...]
  - Report [Map]
    - Species without citations [v]
- Output to:**
  - Text file (ASCII)
    - [temp20.TXT] [...]
  - RTF file
    - [temp20.RTF] [...]
  - Screen  Clipboard

At the bottom, there is a status bar showing "436 Records (7709)" and a progress indicator at "5%". Below the status bar are three buttons: "Append", "Search", and "Output", and a "Quit" button.

- The search form has been overhauled; but most improvements are only visible if you use a screen wide of 1024x768 pixels or even larger (you have to change the screen size manually in the options). So note that you can now enter more words (separated by a comma) in the Full text search field. These words are connected by 'AND'.
- You can search for a specified number of records: first, last or a certain number from a specified record number on.
- You can define the target path and file name clicking on the small button '...' behind the field of the target file names. Long names are allowed as well.
- In the field list (Table, List), it is possible to save and load field lists.

### *Miscellaneous*

- The sum of all recorded data is summarized in Bytes (KB, MB, GB). If you move the mouse over the progress bar in the main menu, this value will be displayed:



- Some analyse programs were slightly improved.

## **Service Releases**

As always, it is recommended to make backup copies of your database before applying a Service Release, even if there is only a small amount of changes in the database. You will find the program SR10.PRF (for PaleoTax) in the HDB2WIN\SR10 folder. Load the file, start it, read carefully the instructions and answer properly the questions. See also the separate file SR10.PDF. User, who have installed Hdb2Win version 2.3 for the first time **do not need to do anything** since their structure is already on the level of PaleoTax SR10.

Take care: you cannot open a PaleoTax database in Service Release 9 with Hdb2Win 2.3.

### ***Modification in the PaleoTax data structure***

No structural changes compared to SR9. Just some comments on future options.

(1)

If a new reference is appended to the Publication table, and the reference is published in a book, the book can be selected/appended clicking on a 'Book' button. Per reference only one book can be selected. This option ('only one item can be selected') will be futurely also applied to the type species of genera. A genus can have only one valid type species, not various and I will adapt the form in SR11. Be prepared and clarify your type species problems now.

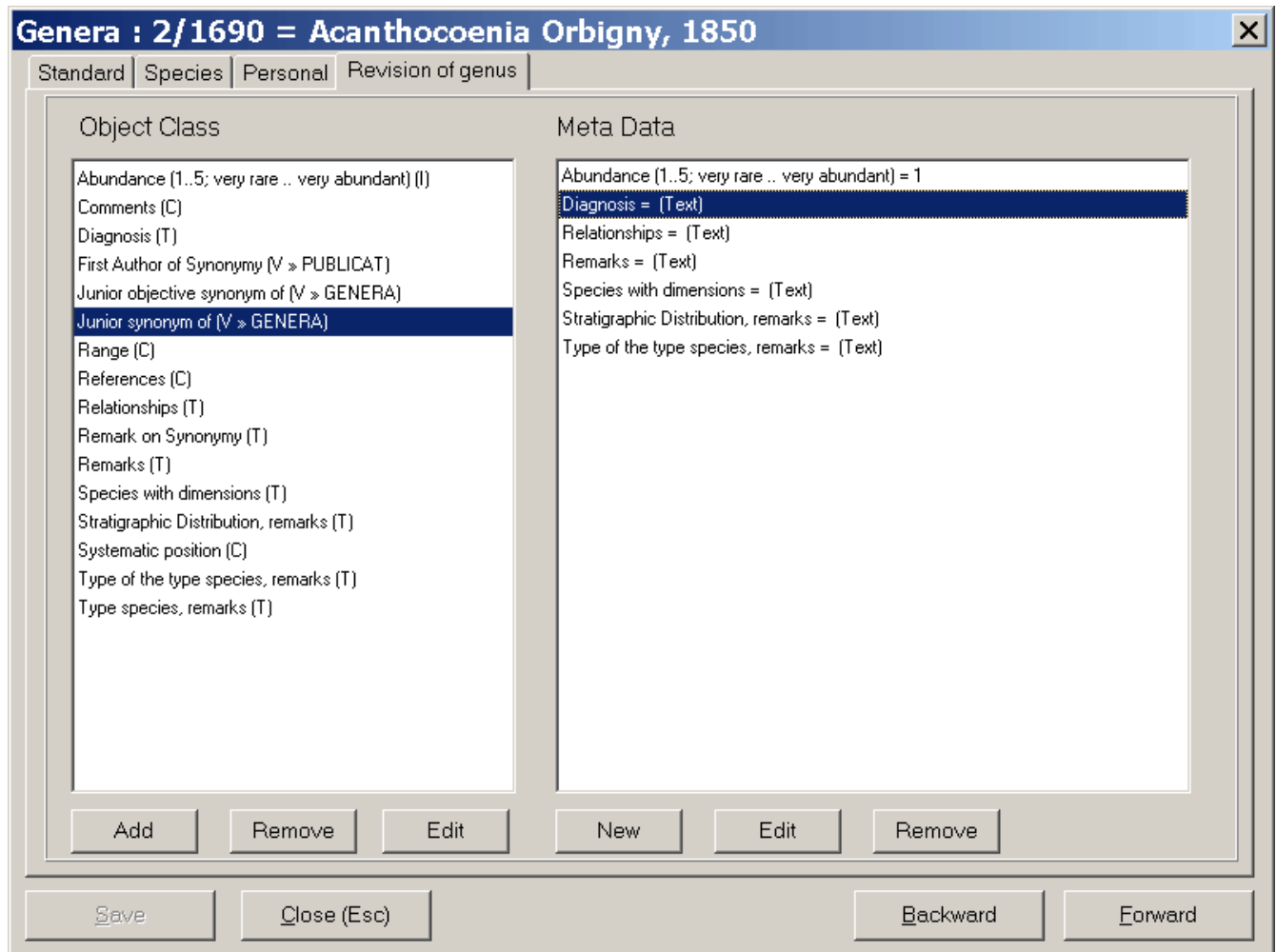
(2)

Type stamps in the most important tables were requested by one user. These stamps will be futurely probably enclosed in the blue hints.

(3)

Some users have claimed that they would like to use PaleoTax as a taxonomic database system and apart from this, to record meta data on their specific organism group on the genus level, e.g. a diagnosis, comments on the systematic position, comments on the type species, on types, on species, subjective synonyms, objective synonyms etc. This concerns mainly text fields. The problem is, that the meta data may differ from one organism group to another. For this reason corresponding data fields are not included in the standard structure.

There exist a structural design which can be connected to any table. This structure consists of two tables, the Object Classes and the Meta Data. The user will define their Object Classes ("Diagnosis", "Remarks on the type species", "Junior Objective Synonym of", "Colour", "Smell") and after defining the classes, for each class (and each genus, of course) data can be recorded ("Colour = Yellow"). Classes can be defined, modified and removed whenever needed. Output of data is of course possible in a form of a catalogue. The picture below shows such a structural extension as it is presently used for the revision of the Cretaceous coral genera. User who are interested in using this type of extension should identify themselves so that the extension together with an output program can be released.



### ***Improved programs in PaleoTax***

- Some tables have more profiles and sort options.
- The consistency check has been improved.
- The Systematic program has been improved and is able to counts the number of species of each level.

---

## Additional Information

- The printed manual for Hdb2Win version 2.1 is still valid for PaleoTax versions 2.2 and 2.3. There are not too many changes since that and practical everything new is documented in the PDF on version 2.2 and in this file. Read the manual. Check the F.A.Q. Both answer most questions. Send question to the list server so other users are informed about probable bugs and problems.
- Many thanks are going to Noritoshi, Alexey and Markus for their critical remarks. Advice, wishes and comments are **always** welcome, also if I cannot realise them on the spot. They are not forgotten, but sometimes they demand structural or conceptional changes. Some are impossible to realize.
- Occasionally I am invited by users to discuss improvements or to help in the case of problems. The last meeting was held March 2008 in Sendai (Japan), to probably next two meetings of this kind will be held in spring 2009 in Nancy (France, unsure) and in late June 2009 in Barcelona (Spain, quite sure). Identify yourself if you are interested to participate in one of them (ASAP). In 2009, I will be also travelling much in Austria, Bulgaria, England, France, Italy, Spain, Switzerland, and The Netherlands - so do not hesitate to contact me (now).