



Hdb2Win/PaleoTax

Program Release 2.2.1 (1 November 2006) / Service Release 8

Modifications compared to program release 2.2.0

Hdb2Win

Various changes

- The key **F10** is traditionally used to save the current record, but it gives also the focus to the window. The focus is taken from the current control which may irritate in some cases. Therefore the key **F12** has the same function as **F10**: saving the current record and closing it.
- The editor has been improved: **Ctrl + A** marks the whole text, **Ctrl + F** opens a search dialog.
- The installation program creates a new directory below Hdb2Win called DOC where all the collected PDF files (documentation on the data analysis, on the Service Release, this file etc.) are stored.

- The full text search (function Fulltext) allows a additional parameter which determines whether the search is case sensitive or not:

FULLTEXT(search string[,search mode[,case sensitivity]])

search string – contains the search string

search mode – 1 (standard) = search only in normal fields, 2 = search also in text fields, 3 search only in text fields

sensitive to cases – 0 (standard) = not case sensitive, 1 = case sensitive

As the brackets indicate, the parameters are optionally. But if you give the case sensitivity, you have also to give the search mode, otherwise the program takes the case sensitivity as the search mode.

- One command in the format of the FRM files, which describes the Edit-Forms, has been improved: the command to describe the font of the data field. When the font has to change in dependence of the content of a data field, the value 32 plus the logical number of the data field which contains the font number was used to describe the font. This has been changed now. The field which selects the font can be given as field name. Instead of writing

```
FONT OTITLE,43 ; OTITLE must be a valid character field
```

you may write:

```
FONT OTITLE,TPLANE ; TPLANE must be a valid numeric field
```

Options

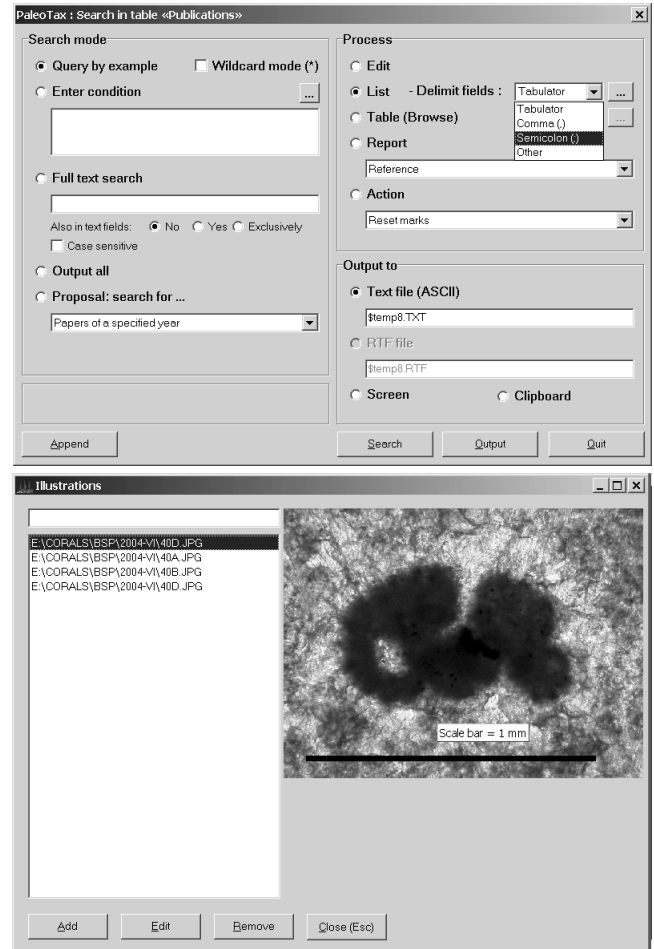
For the options saved in the HDB2WIN.INI see the Manual provided for version 2.1 and the documentation on version 2.2. Herein, only new options are reported. The current number refers to the functions SSYS and GSYS of the interpreter which have access to this values.

83 [SR] SR7 This is only for internal use. Do not modify.

84 [HDCON] ShowGraphHint This option allows (1) or suppresses (0) the hint on pictures stored in the PICTURE table, when displayed in the selection mode.

PaleoTax

- For the full text search, it can be specified whether the search is case sensitive or not. The output mode 'List' provides now a title line and allows a selection of separation characters. This function can be used to export a whole table in the CSV format or any other CDF format which can be easily imported in other databases or spread sheet programs. For the import in spreadsheet programs the semicolon is not a good delimiter; it is better to use the tabulator or any other character which is not part of the data (which can be the case for the semicolon).
- When pictures are displayed on the right side of the selection window and there exists a hint on the graphic in the appropriate picture record, this is not obvious. Therefore, this hint (in the example below the scale) will be displayed when the mouse is moved over the picture.



Interpreter

The interpreter has gained more functionality as follows.

The Interpreter can be stopped at every time when passing a CON or CONX command (that's a reminiscence to MS DOS where Ctrl-Break only worked during a CONsole output). That means, when a message is send to the screen, the program checks whether a key was pressed. This does not work if the program is started from Paleotax, but in that case, there is usually a process communication over the User Break button. So the break works only in the Interpreter environment. The **Space** bar stops only the program, the **Esc** key terminates it.

Options can be stored to and restored from disc

Declaration :

```
OPT.RD      filename      ; restore options
OPT.WR      filename      ; store options
```

filename = name of the file

If the file does not exist, the program stops. The following sequence explains the function:

```

DEFINE      result,i
OPT.INI     3,"Options for Saturday night",1 ; 1 limits to one option
OPT.LBL     1,"Stay at home and work"
OPT.SET     1,1 ; this is the currently selected option
OPT.LBL     2,"Watch TV"
OPT.LBL     3,"Hang out with friends"
FILEX      SATURDAY.OPT ; check whether file exists
JNE        noSaturdayOptions ; jump if it does not exist
OPT.RD     SATURDAY.OPT ; otherwise read the options
:noSaturdayOptions
OPT.EXE    ; if you cancel, result is not saved
OPT.ONE    result ; get the result (1, 2, 3)
OPT.WR     SATURDAY.OPT ; save options for the next Saturday
; ... do anything depending on the result
RELE      result
EXIT

```

Cut and copy the program to see how it works. When the program is started the second time, it remembers the last choice.

Service Release 8

As always, it is recommended to make backup copies of your database before applying SR8. There is a certain amount of changes in the database. You will find the program SR8.PRF in the HDB2WIN\SR8 folder. Load the file, start it, read carefully the instructions and answer properly the questions. See also the separate file SR8.PDF. User, who have installed Hdb2Win version 2.2.1 for the first time **do not need to do anything** since their structure is already on the level of SR8.

Changes of the data structure

Please note the following changes compared to SR7:

- Table SPECIES. The field *Author in Publication* was removed and replaced by a button. It is now possible to add more than only one author to the list of authors who established a taxon within a publication with a different authorship (Miller, Mayer & Smith in Black & White, 1980). Recorded data are transferred by SR8.
- Table GENERA. A new button was added to be able to add authors who described taxa within a publication, comparable to the SPECIES table (see above).
- Table BINOMINA. A new data field *Note on Synonymy* was added. This is a text field which may be used to capture detailed data which do not fit in the already existing character field *Remarks on Synonymy*. Data are **not** automatically transferred from the old *Remarks on Synonymy* field into the *Notes on Synonymy* field. This can be done applying the program MODBINOM.PRF ('Transfer data from Disorder field into Note field and delete Disorder data', 'Übertragen Disorder in das Notizfeld und Inhalt von Disorder löschen'). It is optionally possible to delete the content of the old *Remarks on Synonymy* field.

Miscellaneous

- Table CITATIONS. The Edit Form has a new (fourth) page which allows to pick one or more locality from a list of localities of the last twenty selected localities. The number 20 is not fixed, it can be modified in the ASCII file CITAT4.LBA and set up to fifty. An already selected locality for the current record is not shown in the list.

- Table CITATIONS. The first page of the Edit Form has a new button which replaces the text in the *Citate* field from the selected *Original species*. This was before possible through the F7 key, but the program behind the Replace button is more sophisticated.
- The current database structure is reported in two PDF files (DOC folder) in English and German. Details in the PaleoTax 2.1 Manual.

Improvement of programs

- PaleoTax Tools (PTXTOOLS.PRF) has been amended by a function which lists all species which were only once cited (and never again, according to the recorded data).
- The program to create a HTML output of the database has been improved. Families have now their own index page, synonyms of genera can be displayed, as well as notes on genera and species. It was necessary to replace the HTML_DEF.HTM file, so please restore manually your personal data from the VOR_SR8 folder and adapt the HTML_DEF file to your needs.
There are still some open requests on this function, but we will see how this version works and adapt it later to the needs. Reviewing the high number of options available in this program, options are stored after execution and restored before the options can be set. This helps to have the HTML output always in the same format. This function - to keep the options - will be introduced step by step also in other programs.
- There are two new analyse programs (AW030 and AW031). See the appropriate documentation files (ANALY3_E.PDF, AUSW3_D.PDF), which are installed in the DOC folder and which also available in the Internet. **Much more** is possible, but users have to specify their needs.
- The program for the consistency check has been again improved.
- The program to estimate the database (PTXEST22.PRF) is new and its functions have been improved. Citations which are marked as being suppressed, can be excluded from the range calculation for the species.

Additional Information

- PaleoTax/Map has been greatly improved and will be released as version 2.1. Please compare to the documentation as PDF file.
- PaleoTax registration is now mandatory when a certain amount of data is recorded. You may decide to register when you are prompted; answer the questions, complete the RTF file REGISTER.RTF (using WORDPAD.EXE) and send it to info@paleotax.de.
- The manual for version 2.1 is still valid for PaleoTax 2.2. There are not too many changes and practical everything new is documented in the PDF on version 2.2 and in this file. Read the manual. Check the F.A.Q. Both answer most questions.
- Many thanks are going to Alexey and Noritoshi for their critical remarks. Advice, desires and comments are **always** welcome, also if I cannot realise them on the spot.